

American Sign Language



Winter 2018

For boys and girls - 6 weeks

Fee: \$25

Grades Pre-k - 2

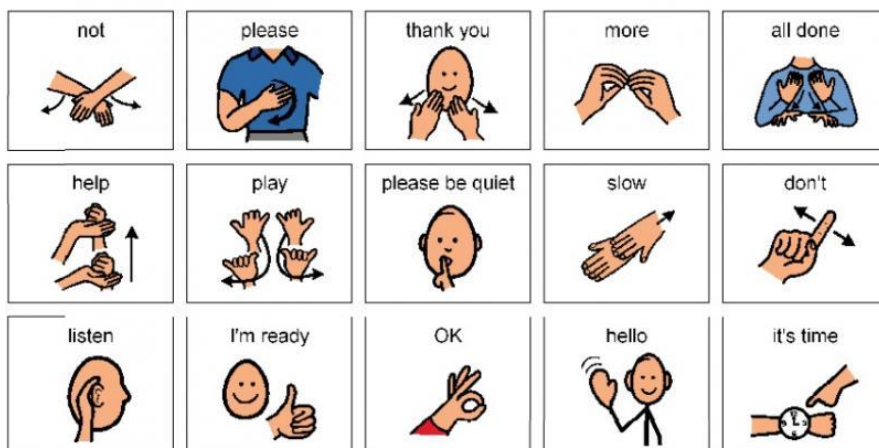
Tuesdays, 3:30 - 4:30 p.m.

Dates: 2/6, 2/13, 2/27, 3/6, 3/13, 3/20

Grades 3-5

Thursdays, 3:30-4:30 p.m.

Dates: 2/8, 2/15, 3/1, 3/8, 3/15, 3/22



Location: Center for Early Learning
Limited to 10 students for each group

Instructor
Chenoa Baker

Please go to the online registration site to register. You will find the link under Community at www.mphschool.org OR fill out the form below and return it to the Community Programs office.

Students not picked up by 4:30 p.m. will remain in Extended Day. A minimal fee will be assessed for Extended Day beyond 15 minutes if you are not contracted.

American Sign Language, Winter 2018

Grades Pre-k - 2 (Tuesdays) and Grades 3-5 (Thursdays)

Register online through www.mphschool.org OR detach form and return it to the Community Programs office.

Student's Name _____ Grade _____

Please check one:

I will pick up my child at 4:30 p.m. when the club ends.

Please send my child to Extended Day after the club regularly.

Fee: \$25 Pay by Check (enclosed)

Visa or Mastercard

Name on Card _____

Exp. Date _____

Manlius Pebble Hill School Community Programs
5300 Jamesville Road, Syracuse, NY 13214 • 315-446-2452