

FAQS

Q: WHY DOESN'T TUITION COVER ALL COSTS?

A: few independent schools or colleges can survive on tuition alone. If MPH charged enough in tuitions to operate without an Annual Fund, we would have to charge a considerable amount more.

Q: ARE GIFTS TO MPH TAX DEDUCTIBLE?

A: MPH is a 501(c)3 not-for-profit organization, and as such, all donations are tax deductible.

Q: HOW DO I DONATE TO MPH?

A: You may choose to donate online via our website by scanning the QR code below, by check, cash, money transfer, or by stock transfer. For questions, please reach out to the Director of Development, Karen Belgrader x-142

Q: MAY I DIRECT MY ANNUAL FUND GIFT TO A SPECIFIC NEED?

A: Yes, you may choose to allocate funds to a specific program, such as faculty retention, tuition assistance, enhancing academics facilities, endowment or another need. These are restricted to funds. However, unrestricted gifts provide MPH with the most financial flexibility. You may also choose to allocate a portion of your gift as restricted and a portion as unrestricted.

THANK YOU FOR SUPPORTING MPH.

**Manlius
Pebble Hill
School**

5300 Jamesville Road
Syracuse, NY 13214
315-446-2452 ext. 142
Questions: Kbelgrader@mphschool.org



**Manlius
Pebble Hill
School**

MPH ANNUAL FUND GUIDE TO GIVING 2023-2024

Manlius Pebble Hill is committed to inspiring our students to think critically, act responsibly, and discover a passion for lifelong learning. MPH engenders a sense of belonging for all community members by honoring each individual.

MPH supports the personal growth of every student and colleague, appreciating that each MPH member is freely bound in a social compact that ensures we are mindful of one another and that we act with our collective interest in mind.

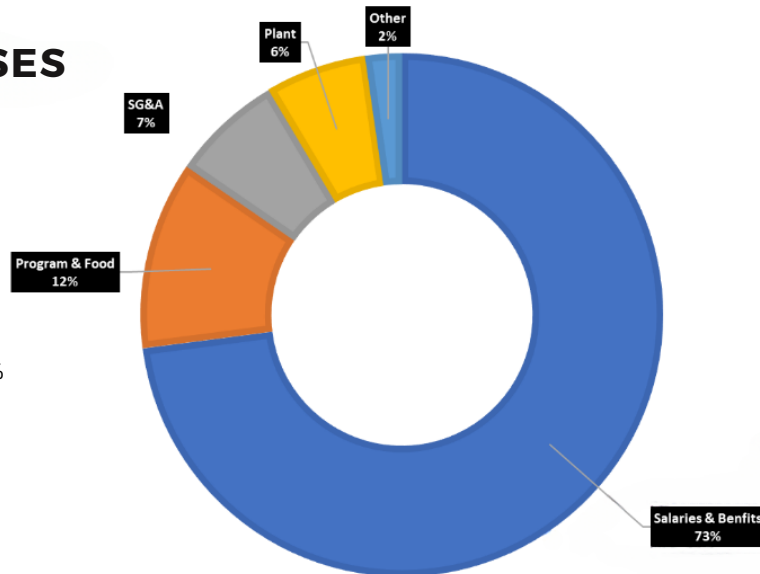
WHAT IS AN ANNUAL FUND

It may be surprising to know that most independent schools' budgets include a tuition rate that covers 75-85% of the cost of each student's education. MPH's Annual Fund covers what tuition does not cover.

ALL IN TOGETHER

Our goal this year is to achieve 100% participation from the MPH community. Currently our Board of Trustees, Administration and Parents' Association Leadership are all in at 100%. This year we are asking our current MPH families to achieve a goal of 91%. Each week an update of our progress is provided in the weekly Snapshot Newsletter. An outdoor fundraising thermometer will be located at the campus entrance which will also show our progress. We ask that every family make MPH a philanthropic priority. Ensuring the financial health of MPH is a shared responsibility, one that we all must be part of to meet our school's educational goals. Achieving 100% participation shows our community's commitment to MPH, and is an important benchmark that corporations and large donors expect to see when making a contribution to MPH, and is an important benchmark that corporations and large donors expect to see when making a contribution..

MPH EXPENSES



Salaries & Benefits 73%
Programs & Food 12%
SG&A 7%
Plant 6%
Other 2%

BRIDGING THE GAP

Like all independent schools, Manlius Pebble Hill School receives no federal, state, or local funding, and therefore depends solely on the generosity of parents, grandparents, alumni, staff, and other donors to bridge the gap between tuition revenue, the cost of running the school and improvements to facilities.

HOW TO SUPPORT MPH

During our fiscal year, we will ask that all parents contribute to provide financial support beyond tuition to bridge the gap and provide for the future. We will also ask parents to be actively involved in reaching out to fellow parents and grandparents to encourage participation in the MPH Annual Fund. Annual gifts vary in size and all gifts whether small or large are valued. Many parents and friends support MPH with a gift between \$250 - \$1,000.

GIVING LEVELS

- Founders Society** \$25,000 +
- Investors Circle** \$10,000-\$24,999
- 1869 Society** \$5,000-\$9,999
- Circle of Excellence** \$2,000-\$4,999
- Friends of the Head of School** \$1,000-\$1,999
- Verbeck Society** \$500-\$999
- Pebble Hill Patron** \$100-499
- Red and White Club** \$99 and under

MATCHING GIFTS

Many companies match their employees' philanthropic contributions, as an employee benefit. Please ask your employer if they are a matching gift corporation. If so, reach out to Karen Belgrader, Interim Director of Development to help facilitate the match.